

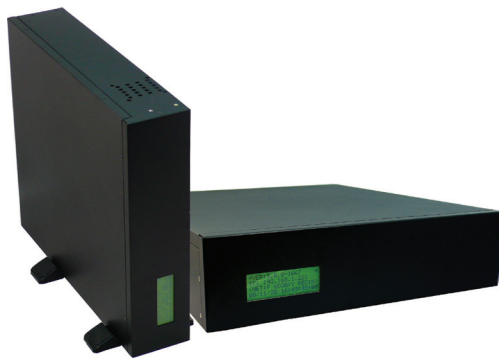
# MatriVideo Compact NVR

## HR-NR3800-2C Series

Instek Digital is proud to announce a cost-effective Network Video Recording (NVR) solution that supports advanced functionality and introduces a new dimension of reliability and performance. The NVR is scalable from 1 to thousands of remote locations. Ease of usage is no longer a futuristic idea, but part of your daily application.

## Features

- ◆ Compact size with high performance
- ◆ Distributed architecture with centralized management
- ◆ High network throughput
- ◆ Low Power consumption with low operating temperature
- ◆ Easy-to-use software for local configuration, live video view and playback
- ◆ Stable and secure application - Embedded Linux OS
- ◆ Support various video compression formats of IP cameras (H.264, MPEG-4, and MJPEG)
- ◆ Real time video recording
- ◆ Synchronized audio/ video recording and playback
- ◆ Equipped with 3 internal hard disk slots
- ◆ Dual watchdog for guaranteed high system availability
- ◆ Remote viewing, access and control via TCP/IP



## A cost effective and compact solution for multi site locations

MatriVideo NVR 2C Series is a network-based video recording solution designed for the distinctive needs of distributed small size installations with centralized management. With support for either 4 or 9 channels of IP cameras, MatriVideo 2C's compact size is ideal for installations with limited space availability.

The MatriVideo 2C NVR supports various IP video compression formats (H.264, MPEG-4, and MJPEG) from different manufacturers. The IP cameras can be set up anywhere on the network without the need for cumbersome cabling, The end result is an innovative IP-based security system that has never been easier to use or more cost effective to purchase.

MatriVideo embedded Linux OS provides a stable and secure system platform. The NVR increases the overall system availability by reducing down time caused by power supply and hard drive failures. The open system architecture allows MatriVideo to self-integrate with various third party solutions, such as digital cameras, POS, access control, fire alarm, and burglar alarm systems. Additionally, with the intelligent and comprehensive video search functionality, users can always retrieve their desired video feeds in almost no time.

HR-NR3800-2C Series is the perfect solution for multi site restaurants, convenience stores, gasoline stations, border patrol, public transportation terminals and any multi building site management locations. . MatriVideo 2C NVRs provide scalability from small site installations to enterprise level installations, from distributed installations to centralized management, with very low bandwidth requirements.

Bundled with the MatriVideo 2C NVR is Command Center One (CCOne), a free software for single NVR management. Command Center One provides the functionality to view live video & perform playback, system configuration setup, and alarm management. Through its user-friendly graphical user interface, even the non-technical users can operate the application software with comfort and ease. CCOne can easily be installed on an on-site computer, remote office desktop, or an executive laptop, with a simple TCP/IP connection.

CCOne-Simple, Easy and Intuitive.

## MATRIVIDEO™

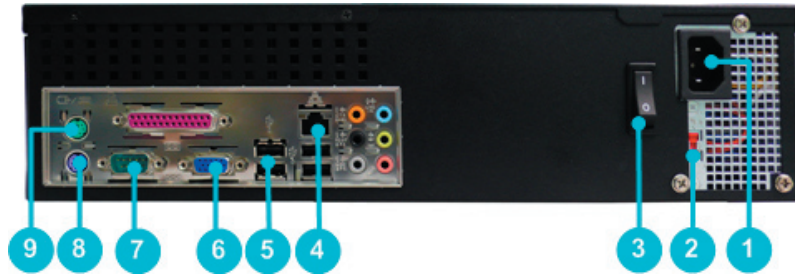
A complete system to provide high resolution, long term digital video storage and IP based CCTV solution on a scalable and reliable platform

**MatriVideo™** is a complete solution for digital video surveillance industry. It is a platform that incorporates the legacy analog CCTV system and new IP-based digital surveillance system with hybrid configuration, distributed enterprise architecture and centralized management.

**MatriVideo™** is an open platform that adopts the latest IT technology yet provides easy installation and configuration for security professionals. Its plug-and-play feature allows users to extend and grow their security sites confidently.

**MatriVideo™** answers the need for larger storage capacity, networkable components, better image indexing, high image resolution, TCP/IP camera and easier camera relocation. It provides a total solution that meets the emergent and diverse demands from security industry.

## Rear Panel



- |   |                   |   |                             |
|---|-------------------|---|-----------------------------|
| 1 | Power Socket      | 6 | VGA Port                    |
| 2 | Voltage Selector  | 7 | COM Port                    |
| 3 | Power Switch      | 8 | PS/2 Connector for Keyboard |
| 4 | Ethernet Port     | 9 | PS/2 Connector for Mouse    |
| 5 | USB 2.0/1.1 Ports |   |                             |



# Specification

Matrividéo NVRs		HR-NR3804-2C, 3809-2C
<b>SYSTEM</b>	Function	NVR
	Operating System	Embedded Linux
	Video Standard	NTSC / PAL
	Dual Watchdog	Yes
<b>IP CAM</b>	Video Input	4, 9 Channels*
	Audio Input	4, 9 Channels*
	Supported Resolution	4CIF, CIF, VGA, 1.3M, 2M, 3M, 5M, 8M
	Supported Format	H.264 / MPEG4 / MJPEG
	Max. Frame Rate**	30 fps (NTSC) / 25 fps (PAL)
<b>RECORDING &amp; STORAGE</b>	Recording Modes	Continuous, Scheduled, Motion Detected, Event Triggered, RVAlarms, Manual
	Pre/Post Alarm Recording	1 ~ 60 seconds
	Internal Storage	3 SATA HDD
	Internal RAID-5	n/a
	External Storage	Archive Server
<b>VIDEO MANAGEMENT</b>	Searching Method	Date / Time / Camera / Alarm List / Smart Search
	Monitoring Environment	MatriVideo Command Center / Command Center Lite / Command Center One
<b>CONNECTORS</b>	Serial Port	RS-232 x 1
	Keyboard / Mouse	PS/2 Style
	Ethernet	RJ-45, 10/100/1000Mbps x 1
	USB	4 x USB 2.0 / USB 1.1 Ports
	VGA Output	15 Pin Female DSUB
<b>I/O CONTROL</b>	I/O Controls	Through Ethernet
<b>CAMERA COMPATIBILITY</b>	Video Server, IP Camera	AACTi, Arecont Vision, AXIS, D-Link, Messoa, Hunt, Panasonic, PELCO, SANYO, SONY, Instek Digital, Vivotek
<b>ELECTRICAL</b>	Electric Power Source	AC 115 / 230V
	Power Output	300 W
<b>ENVIRONMENT</b>	Operating Temperature	0 ~ 40°C
	Humidity	Maximum 65%, non-condensing
<b>PHYSICAL</b>	Dimension	340 mm (W) X 380 mm (D) X 88 mm (H)
	Weight	6.2 kg without HDD

\* Contact Instek Digital for the IP device compatibility. The actual video display performance may vary in accordance with the type of camera(s) and lighting condition.

\*\* Product specification and availability are subject to change without notice.

\*\* MatriVideo is a registered trademark of Instek Digital. All other trademarks are the property of their respective owners.

## CCOne Hardware Requirement

Command Center One		
<b>Computer</b>	CPU	Intel Pentium 4 or Above
	Memory	512MB or Above
	Operating System	Windows XP Professional/ Vista
	Misc.	DirectX 9.0c Speakers, Microphone (Optional)
<b>DISPLAY MONITOR</b>	Supported Resolution	1280x1024 / 1024x768 / 1280x800 / 1680x1050 / 1600x1200 / 1400x1050 / 1920x1080 / 1920x1200



**INSTEK DIGITAL**  
www.instekdigital.com

### Instek Digital USA

3661 Walnut Ave.,  
Chino, CA 91710, USA  
TEL 1 (909) 627-8811  
FAX 1 (909) 627-8838  
Email sales@instekdigital.com

### Instek Digital Taiwan

4F, No.119-1, Baozhong Road,  
Xindian City, Taipei County, Taiwan 231  
TEL 886-2-29141839  
FAX 886-2-29101803

V.20091015