



INSTEK DIGITAL



A complete system to provide high resolution, long term digital video storage and IP based CCTV solution on a scalable and reliable platform

Command Center Quick Start Guide

THANK YOU FOR PURCHASING A QUALITY PRODUCT FROM INSTEK DIGITAL.

THIS QUICK START GUIDE WILL PROVIDE YOU WITH QUICK INSTRUCTIONS NEEDED TO CONFIGURE YOUR DVR (SERVER) AND ALSO VIEW THE VIDEO FROM COMMAND CENTER LITE (CLIENT SOFTWARE).

INSTEK DIGITAL SEPERATES THE CLIENT SOFTWARE FROM THE SERVER INTO TWO SEPERATE ENTITIES.THE REASONING BEHIND THIS SETUP IS THAT IT ALLOWS YOU (THE CUSTOMER) TO PLACE YOUR SERVER IN A SECURE, TAMPER-PROOF LOCATION FOR FURTHER ENHANCING YOUR SECURITY PROTOCOLS.

MatriVideo™ Command Center provides the highest performance and efficiency to manage an enterprise video surveillance system. Working with triple monitors, it is designed with comprehensive and user friendly functionality for video viewing, playback, analytics and alarm responses.

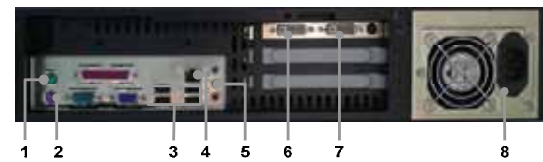
BOX CONTENTS

1. MatriVideo Command Center – x1
2. Triple VGA Connector – x1
3. Keyboard – x1
4. Mouse – x1
5. Power Cable – x1
6. Document CD – x1
7. Quick Start Guide – x1
8. Windows XP CD –x1
9. Warranty Card – x1
10. Registration Card – x1

FRONT PANEL OF THE COMMAND CENTER

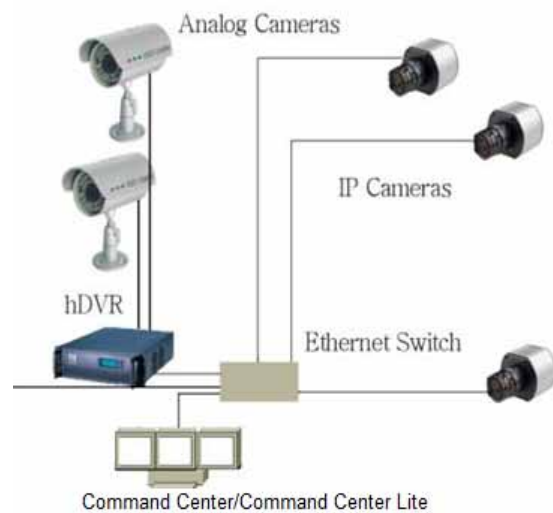


REAR PANEL OF THE COMMAND CENTER



1. Mouse(PS/2)
2. Keyboard(PS/2)
3. USB 2.0/1.1 Ports
4. Ethernet(RJ45)
5. Speaker
6. Monitor 1(VGA Connector A)
7. Monitor 2&3 (VGA Connector B)
8. Power Socket

NETWORK CONNECTION OVERVIEW



STEP 1: CONNECT YOUR COMMAND CENTER



- a. Connect one end of the VGA connector to Terminal 1(T1) monitor and the other end of the VGA connector to the VGA/ DVI converter and connect it to the left port on the Command Center.
- b. Connect one end of the VGA connectors to Terminal 2(T2) and Terminal 3(T3) and the other end to the VGA Splitter. T2 is connected to splitter cable labeled "1" and T3 is connected to the splitter cable labeled "2". The splitter cable is connected to the right port of the Command Center.
- c. Connect the keyboard and the mouse.
- d. Connect the speakers, if necessary.
- e. Connect the Command Center to your network switch/hub.
- f. Connect the power cable.

STEP 2: POWER ON THE COMMAND CENTER

- a. Power on the Command Center.
- b. The default password for login into the Windows Operating System is: id

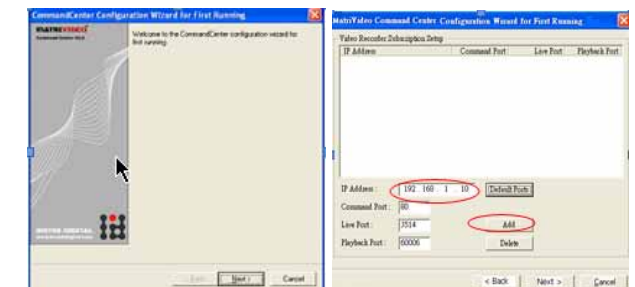
STEP 3: BASIC COMMAND CENTER CONFIGURATION

- a. Adjust the Windows OS time zone to your local time and time zone. From the Start menu, navigate to the Control Panel → Region and Language.
- b. Configure the Command Center IP address as indicated before starting the Command Center application.



STEP 4: STARTING THE COMMAND CENTER APPLICATION

- a. Double click on the Command Center icon on the desktop.
- b. Command Center will require you to add the IP address of at least one DVR, NVR or Archive Server. Follow the on screen prompts to continue. Leave the Command Port, Live Port & Playback Port as default.



- c. Login to the Command Center application. The default username is: admin, default and the default password is: id

CONTACT INFORMATION

We would like to graciously thank you for investing your faith in Instek Digital and being a valuable part of our corporation. Instek Digital's primary goal is to deliver leading edge technology in addition to exceptional customer service and technical support.

Instek Digital technical support representatives are always available to answer any of your support related questions or concerns. Please refer to our website for your regional support contacts:

<http://www.instekdigital.com>

USA:

Phone: 1-909-627-8811

Monday – Friday, 9 a.m. – 6 p.m. (Pacific Time)

ASIA PACIFIC:

Phone: 886-2-2914-1839

Monday – Friday, 9 a.m. – 6 p.m. (GMT+8)

E-mail:

Sales: sales@instekdigital.com

Support: support@instekdigital.com



- d. After entering the Command Center application, you will see a triple monitor layout. Each monitor has the following purpose:

Terminal 1 (T1): Camera Tree, Alarm View

Terminal 2 (T2): Live Video, Playback and Media Bar

Terminal 3 (T3): Live Video (1x1, 2x2, 3x3 and 4x4)

STEP 5: COMMAND CENTER CONFIGURATION

- a. When you initially log in, you will see the following Terminal 1 interface.



- b. Click on the MatriVideo Command Center Setup tab on the bottom left corner of the screen.



- c. Select the desired terminal sequence of (T1, T2, T3). Configure the "Alarm Sound", the "Snapshot" location and NTP server settings. You can also set the "DSP Video Display on Screen" at either 90% or 80% to increase the number of concurrent live video displays. The rule of thumb is: the lower the percentage, the higher the number of concurrent displays.

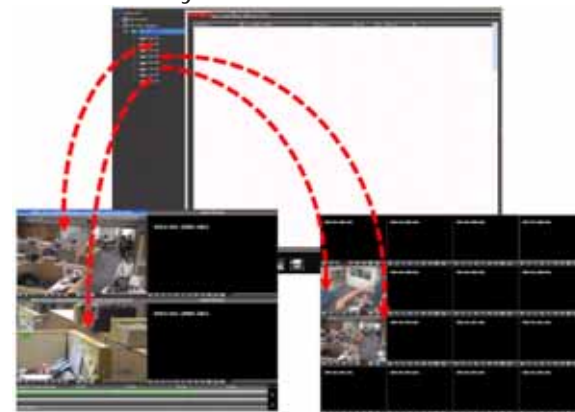


STEP 6: VIEW THE VIDEO

- a. Click on the "+" icon next to the IP address of the DVR to expand your camera tree on Terminal 1.



- b. Drag and drop the video source from the camera tree onto Terminal 2 or the blank patterns (1x1, 2x2, 3x3 or 4x4) on Terminal 3 to view your video feeds.

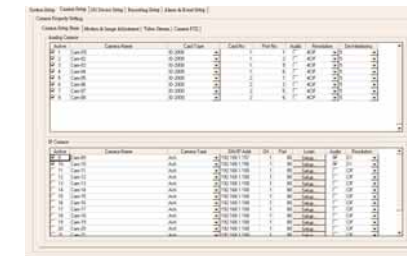


STEP 8: SETUP THE CAMERA NAME / BITRATE/FRAMERATE / 24x7 RECORDING

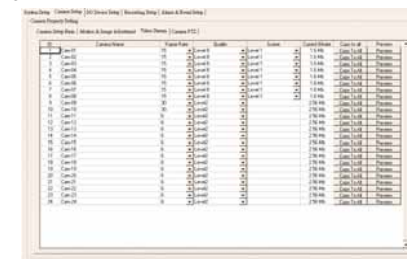
- a. From the camera tree, right click on the DVR IP address. Select 'Video Recorder Setup' and log onto the DVR. The default username is: admin and the default password is: id.



- b. Click on the "Camera Setup" tab → "Camera Setup Basic". Select the Active Cameras by checking the "Active Box" next to the camera(s). Analog Cameras can be setup on the top part of the window and IP cameras can be setup on the bottom part of the window. You can also change the camera name by clicking on the name of the camera, such as "Cam-01", "Cam-02".



- c. Furthermore, click on the "Video Stream" tab to setup the Frame Rate and Bitrate for each camera.



- d. To setup 24x7 recording, click on the "Recording Setup" tab and then "Schedule Recording". Select one camera from the camera panel and change its recording mode to "24x7". You can copy this setting to all the cameras by selecting the option, "Copy to All".

