



INSTEK DIGITAL



A complete system to provide high resolution, long term digital video storage and IP based CCTV solution on a scalable and reliable platform

nCCTV Quick Start Guide

THANK YOU FOR PURCHASING A QUALITY PRODUCT FROM INSTEK DIGITAL.

THIS QUICK START GUIDE WILL PROVIDE YOU WITH QUICK INSTRUCTIONS NEEDED TO CONFIGURE YOUR DVR (SERVER) AND ALSO VIEW THE VIDEO FROM COMMAND CENTER LITE (CLIENT SOFTWARE).

INSTEK DIGITAL SEPERATES THE CLIENT SOFTWARE FROM THE SERVER INTO TWO SEPERATE ENTITIES.THE REASONING BEHIND THIS SETUP IS THAT IT ALLOWS YOU (THE CUSTOMER) TO PLACE YOUR SERVER IN A SECURE, TAMPER-PROOF LOCATION FOR FURTHER ENHANCING YOUR SECURITY PROTOCOLS.

MatriVideo™ nCCTV (Network CCTV) is designed to overcome the limitations and restrictions of the traditional CCTV. nCCTV extends the number of video displays of MatriVideo™ Command Center from triple monitors to as many as needed. With the user-friendly central management software, the operator can instantly call up any camera to the nCCTV display monitor.

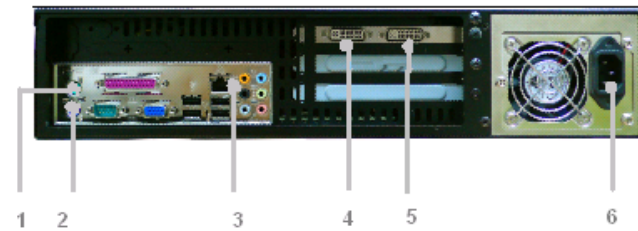
BOX CONTENTS

1. MatriVideo nCCTV – x1
2. Triple VGA Connector – x1 (For model HR-NC3403 only)
3. Power Cable – x1
4. Document CD – x1
5. Quick Start Guide – x1
6. Windows XP CD –x1
7. Warranty Card – x1
8. Registration Card – x1

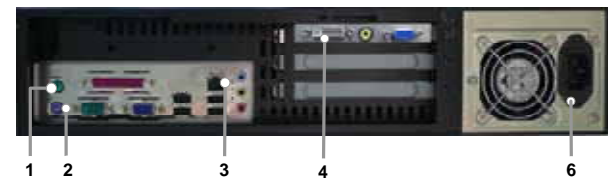
FRONT PANEL OF THE nCCTV



REAR PANEL OF THE nCCTV



HR-NC3802



HR-NC3401

1. Mouse(PS/2)
2. Keyboard(PS/2)
3. Ethernet(RJ45)
4. Monitor 1(VGA Connector A)
5. Monitor 2 (VGA Connector B)
6. Power Socket

STEP 1: CONNECT YOUR nCCTV

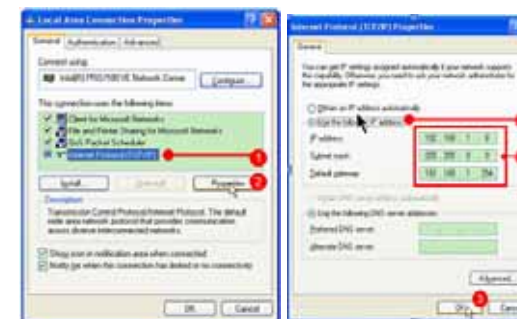
- a. Connect the left VGA Connector to Terminal 1(T1) with the DVI/VGA Converter.
- b. Connect the right VGA Connector to Terminal 2(T2) with the DVI/VGA Converter.
- c. Connect the keyboard and the mouse.
- d. Connect the speakers, if necessary.
- e. Connect to the nCCTV to your network switch/hub.
- f. Connect the power cable.

STEP 2: POWER ON THE nCCTV

- a. Power on the nCCTV.
- b. The default password for login to the Windows Operating System is: id

STEP 3: BASIC nCCTV CONFIGURATION

- a. Adjust the Windows OS time zone to your local time and time zone. From the Start menu, navigate to the Control Panel → Region and Language.
- b. Configure the nCCTV IP address as indicated before starting the nCCTV.



STEP 4: STARTING THE nCCTV PROGRAM

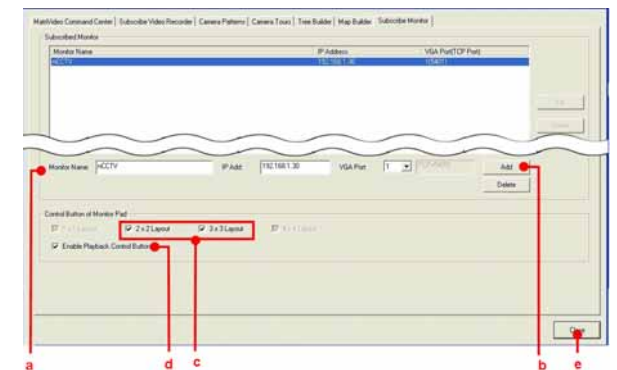
- a. The nCCTV application will start automatically on boot-up. You will see the nCCTV Monitors under the “Startup” menu. Start → Programs → Startup

STEP 5: COMMAND CENTER SETUP

- a. Run the Command Center or Command Center Lite application and select the Command Center (or Command Center Lite) Setup tab.



- b. Click on the “Subscribe Monitor” tab.



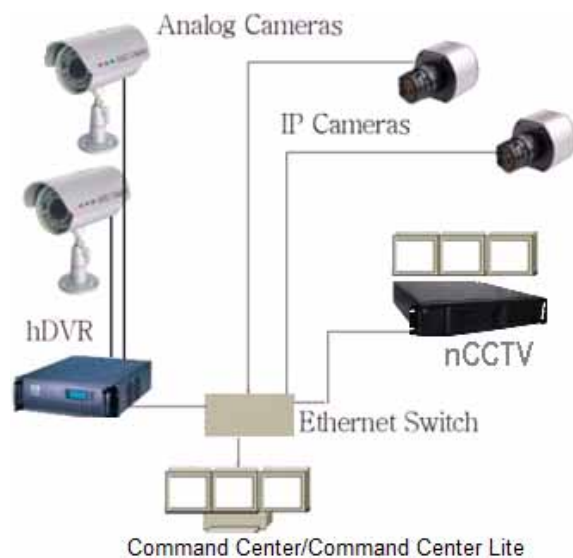
- c. Input the nCCTV monitor name (your choice), IP address of the nCCTV unit and the port numbers in the field. Click “Add” after entering this information.

For the nCCTV Monitor 1, the port number is: 5401

For the nCCTV Monitor 2, the port number is: 5402

- d. Check both the “2x2 Layout” and the “3x3 Layout”
- e. Check “Enable Playback Control”, to display playback control buttons on the nCCTV control window.

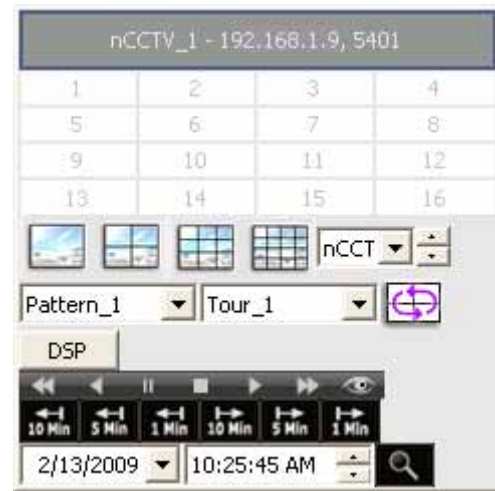
NETWORK CONNECTION OVERVIEW



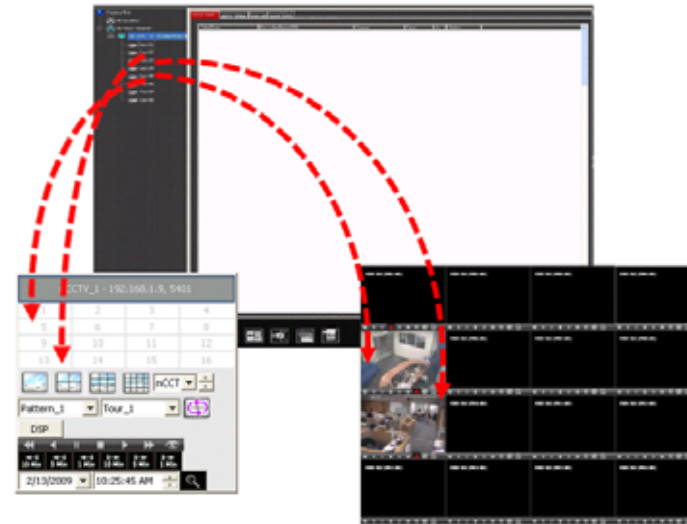
- f. Click the "Close" button once the nCCTV monitors have been added.

STEP 6: CONTROL THE nCCTV

- a. Once the nCCTV Setup is complete, you will see the nCCTV Control Window pop up on either your Command Center or Command Center Lite.



- b. The nCCTV monitor is selected by clicking on the drop down menu with all the nCCTV monitor names, as assigned in the previous steps.
- c. Once the monitor name is selected, you can select either 1x1, 2x2, 3x3 or 4x4 pattern by clicking on the pattern boxes in the nCCTV control window.
- d. Once the pattern box is selected, then you can drag and drop the camera from the camera tree to the "numbered" boxes in the nCCTV Control Window to view the camera feeds on your nCCTV Monitor.



CONTACT INFORMATION

We would like to graciously thank you for investing your faith in Instek Digital and being a valuable part of our corporation. Instek Digital's primary goal is to deliver leading edge technology in addition to exceptional customer service and technical support.

Instek Digital technical support representatives are always available to answer any of your support related questions or concerns. Please refer to our website for your regional support contacts:

<http://www.instekdigital.com>

USA:

Phone: 1-909-627-8811

Monday – Friday, 9 a.m. – 6 p.m. (Pacific Time)

ASIA PACIFIC:

Phone: 886-2-2914-1839

Monday – Friday, 9 a.m. – 6 p.m. (GMT+8)

E-mail:

Sales: sales@instekdigital.com

Support: support@instekdigital.com

