



**INSTEK DIGITAL**



A complete system to provide high resolution, long term digital video storage and IP based CCTV solution on a scalable and reliable platform

Archive Server (3U) Quick Start Guide

THANK YOU FOR PURCHASING A QUALITY PRODUCT FROM INSTEK DIGITAL.

THIS QUICK START GUIDE WILL PROVIDE YOU WITH QUICK INSTRUCTIONS NEEDED TO CONFIGURE YOUR DVR (SERVER) AND ALSO VIEW THE VIDEO FROM COMMAND CENTER LITE (CLIENT SOFTWARE).

INSTEK DIGITAL SEPERATES THE CLIENT SOFTWARE FROM THE SERVER INTO TWO SEPERATE ENTITIES.THE REASONING BEHIND THIS SETUP IS THAT IT ALLOWS YOU (THE CUSTOMER) TO PLACE YOUR SERVER IN A SECURE, TAMPER-PROOF LOCATION FOR FURTHER ENHANCING YOUR SECURITY PROTOCOLS.

**The MatriVideo™ Archive Server is designed to extend and guard the hDVR storage. The video data from the DVR can be remotely archived via the network. The Archive Server satisfies the need for long term storage of recorded video data.**

## BOX CONTENTS

1. MatriVideo Archive Server – x1
2. Document CD – x1
3. Quick Start Guide – x1
4. Power Cable – x1
5. Bracket Pair – x1
6. Screws Set – x1
7. Warranty Card – x1
8. Registration Card –x1

## NETWORK CONNECTION OVERVIEW



## FRONT PANEL OF 3U ARCHIVE SERVER



## REAR PANEL OF THE 3U ARCHIVE SERVER



1. Power Socket
2. Power Switch
3. Ethernet (RJ45)
4. SCSI Interface (Optional) For DAS Connection
5. COM2 (Reserved)

## STEP 1: CONNECT YOUR ARCHIVE SERVER

- a. Carefully remove the 4 screws from the front handles to open the front panel.



- b. Use your thumb to press the key hole of the HDD tray and push it up to unlock the HDD tray. Remove the HDD trays from the front

panel carefully. Secure the HDD inside the tray with 4 screws each. Insert the HDDs (with the trays) back into their slots from HD0-HD7.



- c. Secure the Archive Server front panel back on by tightening the 4 screws.
- d. Connect the Archive Server to the network.

## STEP 2: POWER ON THE ARCHIVE SERVER

- a. Connect the power cord.
- b. Power on the Archive Server from the rear panel. The booting process will take a few minutes to complete.
- c. Once the boot-up is complete, you will see the following information: (System Version, IP Address, Network Connectivity Information, and the System Date & Time) on the front LCD Panel.



## STEP 3: INSTALL COMMAND CENTER LITE

- a. Insert the Command Center Lite CD into the CD-ROM drive of your personal laptop or desktop and run the Command Center Lite Setup application setup.

## STEP 4: CONFIGURE THE ARCHIVE SERVER

- a. Configure the Archive Server either via putty (see step b) or connect a keyboard and a monitor directly to the Archive Server (jump to step c).
- b. Putty is an SSH program used to connect to the Archive Server remotely. On your laptop or desktop, navigate to: Start → All Programs → Instek Digital → Command Center Lite → Putty. A telnet window will open. Enter the IP address of the Archive Server in the box labeled, "Host Name or IP Address". (IP address is displayed on the front LCD panel of the Archive Server, default IP: 192.168.1.245). Click on the "Open" button to start a remote connection (telnet session) to the Archive Server.

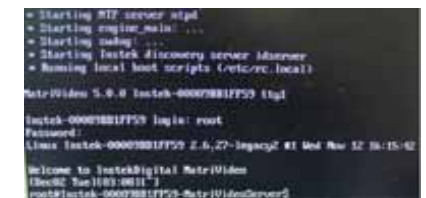


The Archive Server uses an Embedded Linux Operating System and is password protected for your own safety. Once the keyboard and monitor is connected to the Archive Server,

Connection via Putty:



Direct Connection via the Archive Server:



- c. Under the OS prompt, type in **hdsm** to run the hDVR System Manager application.



- d. Change the Time Zone:

System Configuration → Time Zone Change → Select Continent or Area → Select Country/Region. Press “Yes” to confirm.

- e. Change the Date/Time:

System Configuration → Date/Time Change → Press Proceed to stop the process and wait for a few seconds → Use [TAB], Up Arrow, Down Arrow to change the Year, the Month and the Date. Use [TAB], Up Arrow, Down Arrow to change the Hour, the Minutes and the Seconds → Press “Proceed” to accept the changes.

- f. Change the IP Address:

System Configuration → Time Zone Change → Select Continent or Area → Select Country/Region. Press “Yes” to confirm.

- f. Change Date/Time:

System Configuration → Date/Time Change → Press Proceed to stop the process and wait for a few seconds → Use [TAB], Up Arrow, Down Arrow to change the Year, the Month and the Date. Use [TAB], Up Arrow, Down Arrow to change the Hour, the Minutes and the Seconds → Press “Proceed” to accept the changes.

- g. Change the IP Address:

- h. System Configuration → Network Settings → IP Configuration → Select eth0 → Enable eth0 → Static IP Configuration → Enter the

IP address, Netmask, Gateway → Press “OK” to proceed. The eth0’s IP address is changed to “192.168.1.10” in the document. Please wait for a few moments for the changes to take effect.

Notice: Keep the value of MTU as default (1500) unless you have other devices such as a SAN connected to the same network.



Notice: The Archive Server (3U) supports 3 LAN ports (eth0, eth1, eth2). Enter the IP address for each LAN port. Eth1 should be connected to the same network group as the

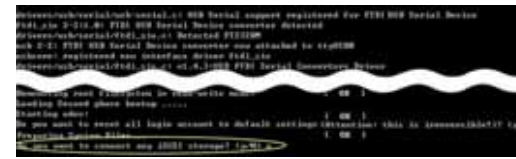
DVR and Eth2 should be connected to the same network group as the SAN (optional). Use the netmask to split the LAN segments. Refer to the user manual for additional information.

- i. Remember to go back to the hDVM main menu → hDVR → Start to start the Archive Server services. This will take a few seconds to complete.

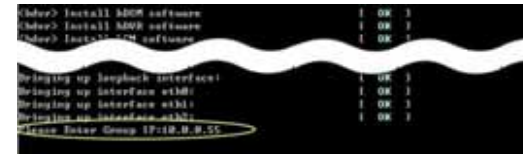
### STEP 5: CONFIGURE THE ARCHIVE SERVER – CONTINUED

- a. Add the SAN Storage to the Archive Server: (OPTIONAL): The Archive Server can connect to the SAN as an additional storage repository using an iSCSI connection. Proceed directly to step e, if there is no SAN device in your particular setup.
- b. Power off the Archive Server: Under the OS prompt, type in: reboot. Unit will power off and then power on again.

- c. During the Archive Server boot up process, you will see the question, “Do you want to connect any iSCSI Storage? (y/N)”. Hit “y” to continue.



- a. Enter the group IP of the SAN and then continue the boot up process.

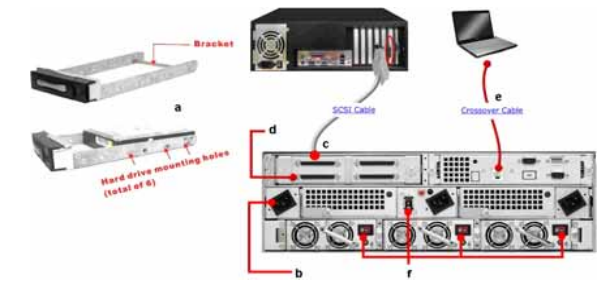


- d. Add Storage to the Archive Server: The first HDD will be added automatically to the Archive Server. Any subsequent HDDs will need to be added via hDVM.

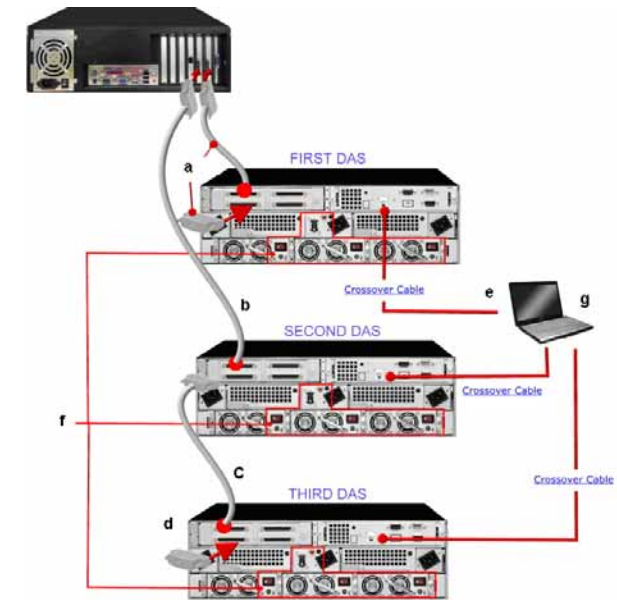
- e. Add Storage to the Archive Server, Part II: From hDVM → Storage Management → Add Storage Repository → Select the available storage to add individually or alternatively select “All” to add the entire storage repository and then select “OK”. Subsequently proceed to the menu: “Detect Available Disk Volume” to check the status of the HDDs. The status of the HDDs should be “In Use”.

- f. Add RAID5 Storage to the Archive Server: (OPTIONAL) For Internal RAID5 Storage configuration, refer to the Archive Server user manual.

- g. Add DAS Storage to the Archive Server: (OPTIONAL): Refer to the Archive Server user manual if you are using the DAS as an additional storage device.



Single DAS Configuration



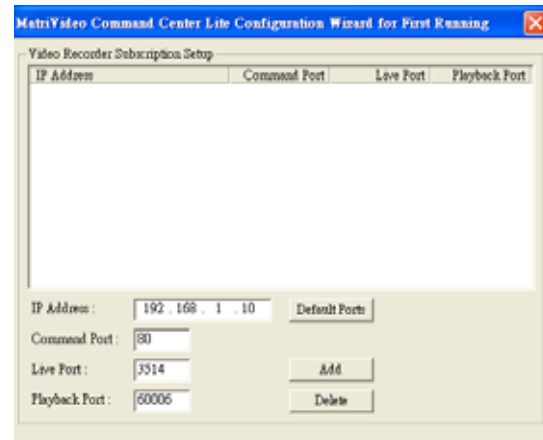
Multiple DAS Configuration

### STEP 6 SUBSCRIBE THE ARCHIVE SERVER

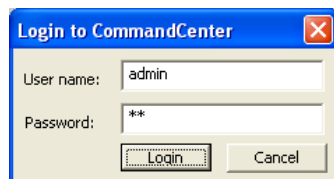
- a. Run the Command Center Lite / Command Center software. During the first run, you will be asked to subscribe (or add) the Archive Server to the video recorder subscription list.
- b. Enter the IP address, Command Port, Live Port and the Playback Port of Archive Server.  
Command Port: 80,  
Live Port: 3514

Playback Port: 60006

Note: Do not change these port numbers if connecting the Archive Server in a LAN environment.



- c. Hit the "Add" button to continue. Add additional Archive Servers in a similar fashion. When all the Archive Servers have been added, hit "Next" to continue.
- d. Finish the configuration wizard and log into Command Center application. The default username is : admin, and the default password is: id

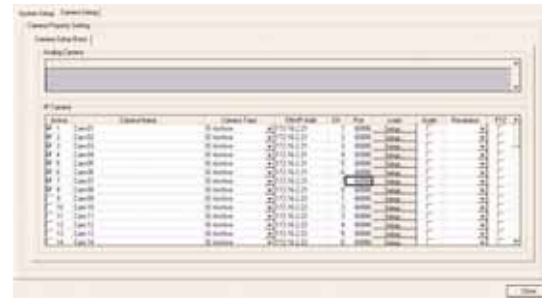


### STEP 7: SETUP THE DVR/CAMERA

- a. Right click on Archive Server's IP address from the camera tree. From the menu selection, select "Video Recorder Setup". The default username is "admin" and the default password is "id". A single Archive Server can manage a maximum of 4 DVRs and 64 cameras on the network.

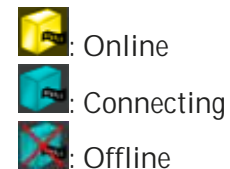


- b. Select the "Camera Setup" tab.
- c. Select the "Camera Setup Basic" tab. Check the "Active" box next to the camera name(s) to enable the camera(s).

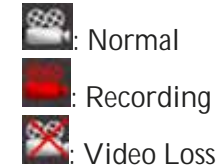


- d. Under the "IP Camera" table, enter the Camera Name and the IP Address. The "Camera Type" by default should be "ID-Archive" and the port number by default should be "60006".
- e. Set the login credentials for each individual camera to enable the archive functionality. The default login name is "admin" and the default password is "id".
- f. Do not change any values under "Audio, Resolution" or "PTZ". This functionality is not supported by the Archive Server.
- g. Click "Close" to complete the setup process. The Archive Server will start "archiving" the DVR's recorded video onto the storage devices attached to Archive Server. You will now be able to see the Camera Tree displaying the icons of the Archive Server icons and its respective cameras.

Status of the Archive Server:



Archive Server Camera Icon(s)

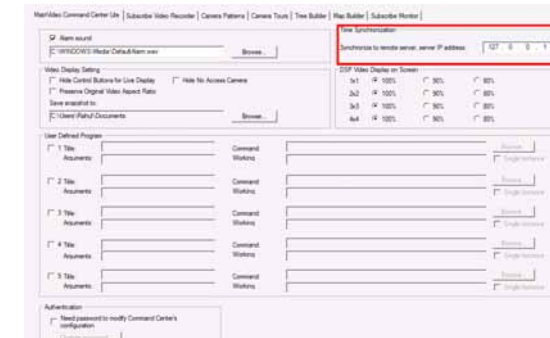


### STEP 6: TIME SYNC WITH THE ARCHIVE SERVER

- a. Click on the MatriVideo Command Center Setup (or Command Center Lite) tab on the bottom left corner of the screen.



- b. Type in the IP address of the archive server or an available time server. This will keep the time in sync between the Archive Server and your laptop/desktop running Command Center Lite and the NTP server.



### CONTACT INFORMATION

We would like to graciously thank you for investing your faith in Instek Digital and being a valuable part of our corporation. Instek Digital's prime goal is to deliver leading technology in addition to exceptional customer service and technical support.

Instek Digital technical support representatives are always available to answer any of your support related questions or concerns. Please refer to our website for your regional support contacts:

<http://www.instekdigital.com>

USA:

Phone: 1-909-627-8811

Monday – Friday, 9 a.m. – 6 p.m. (Pacific Time)

ASIA PACIFIC:

Phone: 886-2-2914-1839

Monday – Friday, 9 a.m. – 6 p.m. (GMT+8)

E-mail:

Sales: [sales@instekdigital.com](mailto:sales@instekdigital.com)

Support: [support@instekdigital.com](mailto:support@instekdigital.com)

