



INSTEK DIGITAL



A complete system to provide high resolution, long term digital video storage and IP based CCTV solution on a scalable and reliable platform

Video Server Quick Start Guide

THANK YOU FOR PURCHASING A QUALITY PRODUCT FROM INSTEK DIGITAL.

THIS QUICK START GUIDE WILL PROVIDE YOU WITH QUICK INSTRUCTIONS NEEDED TO CONFIGURE YOUR DVR (SERVER) AND ALSO VIEW THE VIDEO FROM COMMAND CENTER ONE (CLIENT SOFTWARE).

INSTEK DIGITAL SEPERATES THE CLIENT SOFTWARE FROM THE SERVER INTO TWO SEPERATE ENTITIES.THE REASONING BEHIND THIS SETUP IS THAT IT ALLOWS YOU (THE CUSTOMER) TO PLACE YOUR SERVER IN A SECURE, TAMPER-PROOF LOCATION FOR FURTHER ENHANCING YOUR SECURITY PROTOCOLS.

The MatriVideo™ Video Server adopts the Embedded Linux Operating System for the best stability and reliability. By taking advantage of the advanced H.264 technology, it supports real-time video and two-way audio. The MatriVideo™ Video Server can also seamlessly integrate with the MatriVideo™ video recorder.

BOX CONTENTS

1. HR-VS3401-H Video Server – x 1
2. Document CD – x 1
3. Quick Start Guide – x 1
4. Power Supply Voltage Stabilizer – x1
5. Power Cable – x 1
6. RS-232 Cable with RJ-45 Connector – x 1
7. Warranty Card – x1
8. Registration Card – x1

PRODUCT APPEARANCE



CONNECTORS

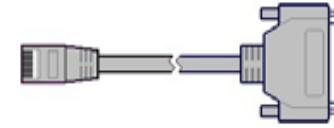


1. External Alarm Input/ Relay Output
2. Network Connector
3. RS-232 Serial Port
4. Power
5. Video Input BNC Port
6. Audio Input BNC Port
7. Line In Audio Input
8. Audio Output
9. Power Indicator

STEP 1: CONFIGURE IP ADDRESS OF THE VIDEO SERVER

- a. Prior to installation, power-off the video server and any other equipment that is connected to the unit. Additionally, also check the power supply voltage to avoid a voltage mismatch.

- b. Connect the power cable and the power supply voltage stabilizer to the video server. Ensure that the power indicator is on.
- c. Connect the video server to the COM port of your computer using the RS-232 cable with the RJ-45 connector.

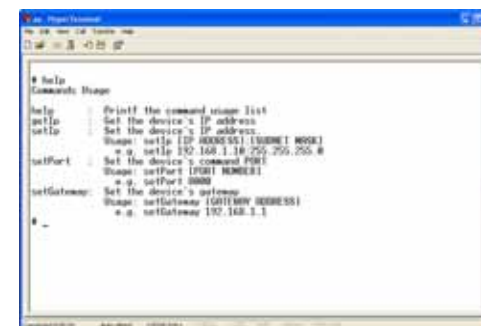


To Video Server To Computer

- d. Run the HyperTerminal program in Windows by navigating to Start > Programs > Accessories > Communications > Hyper Terminal
- e. Assign the connection a name and select the appropriate icon. Press "Ok" to proceed.
- f. Select the COM port number. Press "Ok" to proceed.
- g. Configure the serial port properties:
Bits per second: 115200,
Data bits: 8, Parity: None,
Stop bits: 1, Flow control: None
Press 'OK' once completed.



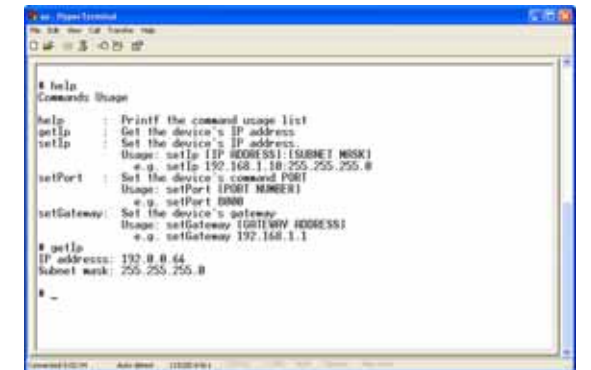
- h. You will see the HyperTerminal connection screen. Type 'help' after the prompt character '#' to verify the supported commands.



- i. Type "getIp" to obtain the current IP address and the subnet mask.



- j. Use the command "setIp" to configure the IP address of the video server and the subnet mask. For example, configure the IP address as 192.168.1.100 and the subnet mask as 255.255.255.0. The syntax of the command should be: "setIp 192.168.1.100:255.255.255.0"



- k. Type the command "getIp" to check if IP address has been changed accordingly. If not, please repeat step j to configure the IP address.

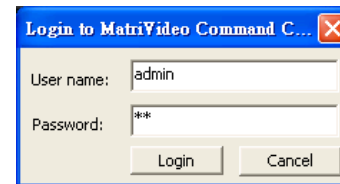
- l. Use the command "setGateway" to configure the gateway if a gateway exists on the network, otherwise skip this step. For example, if a gateway exists on the surveillance network with the IP address 192.168.1.1, then the syntax of the command should be: "setGateway 192.168.1.1"

STEP 2: INSTALL COMMAND CENTER LITE

- Insert the Command Center Lite (or Command Center One) CD into the CD-ROM drive of your personal laptop or desktop and run the Command Center Lite application setup.



- Log into the Command Center Lite Application. The default username is "admin" and the default password is "id"



STEP 3: RUN THE COMMAND CENTER LITE APPLICATION

- Connect an analog camera to the "Video Input BNC Port" of the video server.

The video server also supports audio inputs. Connect to "Audio Input BNC Port" of the video server from camera if you need it.

- Run the Command Center Lite software.
- Skip this step if you have already subscribed a video recorder. If not, then proceed:

Enter the IP address, the Command Port, the Live Port and the Playback Port of the video recorder.

Command Port: 80

Live Port: 3514

Playback Port: 60000

Note: Do not change these port numbers if connecting the video recorder in a LAN environment.

Hit the "Add" button to continue. Add additional video recorders in a similar fashion. When all video recorders have been added, hit "Next" to continue.

STEP 4: CONFIGURE THE VIDEO SERVER

- Right-click on the video recorder's IP address on the camera tree. From the menu selection, select "Video Recorder Setup". The default username is "admin" and the default password is "id"



- Select the "Camera Setup" tab.
- Select the "Camera Setup Basic" tab. Check the "Active" box next to the camera name(s) to enable the camera.

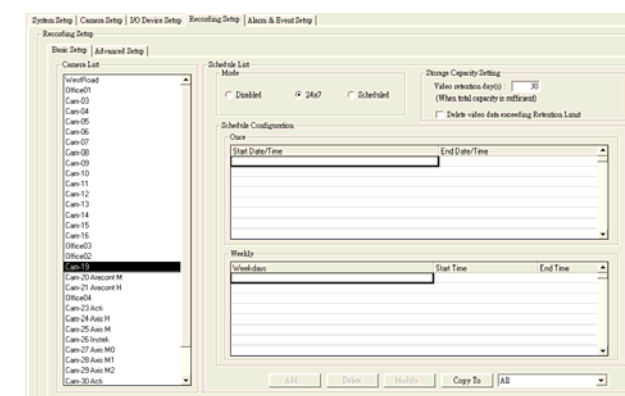
Note: Please refer to the camera manual to configure the IP address of each camera prior to this configuration.



- Enter the Camera Name.
- Select the "Camera Type" as "ID VS2104-H"
- Enter the "IP Address" of the IP camera(s) accordingly. NDS is also supported if available on the surveillance network.
- "Channel" number is dependent on the IP camera. For HR-VS3401-H, there is only one channel.
- The port number for the video server is: "8000"
- The "Login" option is used for accessing the cameras to save the configuration changes. For the video server (HR-VS3401-H), the login name is "admin" and the password is "12345".
- Check "Audio", if supported. Refer to your camera manual.
- Select the "Resolution".
- Click on the "Video Stream" tab to setup the Frame Rate and Bitrate (Quality) for each individual camera.

| ID | Camera Name | Frame Rate | Quality | Stream | Command Port | Live Port | Playback Port |
|----|----------------|------------|----------|---------|--------------|-----------|---------------|
| 1 | VideoFeed | 6 | Level 12 | Level 1 | 1.2 Mb | 3514 | 60000 |
| 2 | DRW001 | 25 | Level 12 | Level 1 | 1.5 Mb | 3514 | 60000 |
| 3 | Can-01 | 15 | Level 12 | Level 1 | 1.2 Mb | 3514 | 60000 |
| 4 | Can-04 | 15 | Level 12 | Level 1 | 1.2 Mb | 3514 | 60000 |
| 5 | Can-05 | 6 | Level 12 | Level 1 | 1.2 Mb | 3514 | 60000 |
| 6 | Can-06 | 15 | Level 12 | Level 1 | 1.2 Mb | 3514 | 60000 |
| 7 | Can-07 | 15 | Level 12 | Level 1 | 1.2 Mb | 3514 | 60000 |
| 8 | Can-08 | 15 | Level 12 | Level 1 | 1.2 Mb | 3514 | 60000 |
| 9 | Can-09 | 15 | Level 12 | Level 1 | 1.2 Mb | 3514 | 60000 |
| 10 | Can-10 | 15 | Level 12 | Level 1 | 1.2 Mb | 3514 | 60000 |
| 11 | Can-11 | 15 | Level 12 | Level 1 | 1.2 Mb | 3514 | 60000 |
| 12 | Can-12 | 15 | Level 12 | Level 1 | 1.2 Mb | 3514 | 60000 |
| 13 | Can-13 | 15 | Level 12 | Level 1 | 1.2 Mb | 3514 | 60000 |
| 14 | Can-14 | 15 | Level 12 | Level 1 | 1.2 Mb | 3514 | 60000 |
| 15 | Can-15 | 15 | Level 12 | Level 1 | 1.2 Mb | 3514 | 60000 |
| 16 | Can-16 | 15 | Level 12 | Level 1 | 1.2 Mb | 3514 | 60000 |
| 17 | DRW002 | 6 | Level 12 | Level 1 | 1.5 Mb | 3514 | 60000 |
| 18 | DRW003 | 6 | Level 12 | Level 1 | 1.5 Mb | 3514 | 60000 |
| 19 | Can-17 | 6 | Level 2 | - | 1.5 Mb | 3514 | 60000 |
| 20 | Can-20 Annot H | 6 | Level 2 | - | 1.5 Mb | 3514 | 60000 |
| 21 | Can-21 Annot H | 6 | Level 2 | - | 1.5 Mb | 3514 | 60000 |

- To setup 24x7 recording, click on the "Recording Setup" tab and then click on the "Basic Setup" tab. Select a camera from the camera panel and change its recording mode to "24x7".



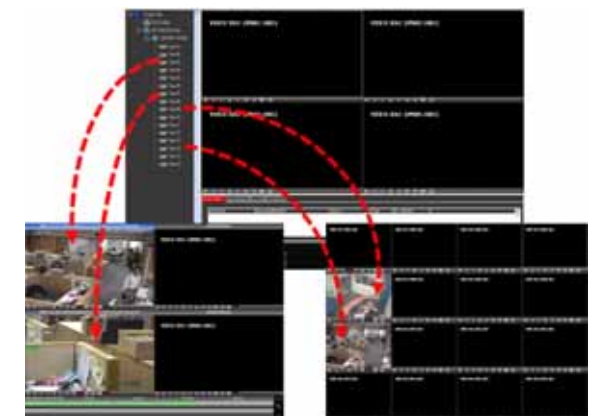
- Remember to exit the Command Center (or Command Center Lite) application and run the application again to save the configuration changes.

STEP 5: VIEW LIVE VIDEO

- Click on the "+" icon next to the IP address of the video recorder to expand your camera tree.



- Drag and drop the video source from the camera tree to the blank patterns (1x1, 2x2, 3x3 or 4x4) to view your video.



CONTACT INFORMATION

We would like to graciously thank you for investing your faith in Instek Digital and being a valuable part of our corporation. Instek Digital's prime goal is to deliver leading technology in addition to exceptional customer service and technical support.

Instek Digital technical support representatives are always available to answer any of your support related questions or concerns. Please refer to our website for your regional support contacts:

<http://www.instekdigital.com>

USA:

Phone: 1-909-627-8811

Monday – Friday, 9 a.m. – 6 p.m. (Pacific Time)

ASIA PACIFIC:

Phone: 886-2-2914-1839

Monday – Friday, 9 a.m. – 6 p.m. (GMT+8)

