

Instek Digital™ HD Cube NVR was designed for the distinctive needs of distributed enterprise installations with centralized management. Each HD Cube NVR supports 4, 9 and 16 channel IP-camera channels and has 4 swappable HDDs trays. Multiple HD Cube NVRs can be connected via a network to allow both on-site and off-site management. It also has a VGA output to support a local display monitor to show live video in camera patterns and tours eliminating the need for a client computer and saving further space and resources. The HD Cube NVR has a unique web user interface which can be used to view live and playback video, NVR status as well as NVR setup for camera tours and camera. And with its cost-effective pricing, it can be installed across multiple locations, making it the ideal NVR for today's distributed retail business model. Instek Digital™ HD Cube NVR is the perfect solution for multi-site restaurants, convenience stores, gas stations and any other multi-site management location. In addition, it includes Instek Digital™ state-of-the-art video management software Command Center Lite.



Key Features

- Local display function
- Stable and secure application on Linux OS
- Equipped with 4 swappable hard disk trays
- Supports various video compression formats of IP cameras (H.264 / MPEG-4 / MJPEG)
- Supports various image resolutions (CIF / D1 / 720p / Full HD)
- Web interface for online viewing of live and video playback
- Support up to 16 cameras
- SDK API ready for integration with POS, Access Control and Building Automation systems
- Mobile Client Platform: iOS / Android / Windows Phone
- Layout 1x1, 2x2, 3x2, 3x3, 4x4, 1+7, 2+7, 2+8 and 1+12
- Pattern and tour functionality
- User-friendly video search
- On screen event alarm

INSTEK DIGITAL

Instek Digital is a video surveillance business unit of Good Will Instrument Co., Ltd. and focus on the development of high quality digital surveillance solutions. The company inherited over 20-years of surveillance experience. Instek Digital has the luxury of a strong financial background supported by Good Will Instrument Co., Ltd. – has over 40-years of electronics R&D and manufacturing experience. And Good Will Instrument Co., Ltd. is also listed on the Taiwan Stock Exchange.

Instek Digital offers a wide array of video surveillance software and hardware – under the brand of Instek Digital. The core design are based on the following principles; “User-Friendliness”, “Scalability” and “Reliability”. Instek Digital’s solutions are based on an open platform – creating seamless third party integration. With this concept Instek Digital has created a business model that can meet every aspect in today’s surveillance demand. The results speak for themselves – based on small and large projects that we have deployed around the world.

Powerful Features



multiple live view

up to 16 channels
D1 live and max.
1080P display resolution



multiple playback view

up to 16 channels



monitor resolution

max. 1920 x 1080



pattern & tour

easily run
camera pattern &
tour



instant control

forward and backward video
investigation by time



PTZ

control PTZ
cameras directly
from the local
GUI



video search

video search by
date and time



instant event notification

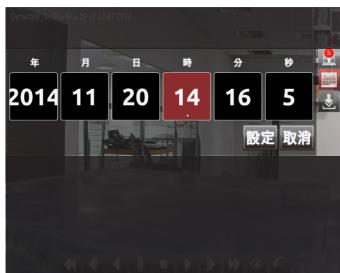
icon will be
shown on
screen and by
clicking



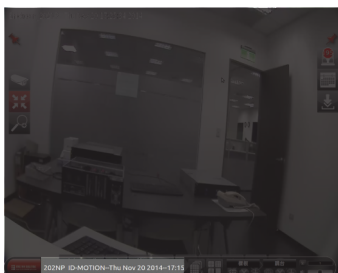
audio

supports audio
recording*

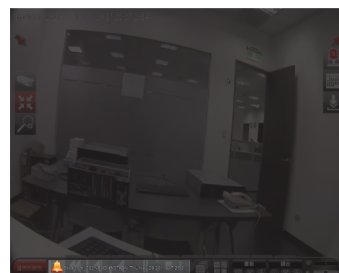
Seek Feature



Alarm Marque



Alarm Notification



Instek Digital State-of-the-Art Video Management Software (Command Center Series)

The HD Cube NVR comes with Instek Digital's state-of-the-art Video Management System Command Center Lite. Command Center Lite displays real-time video in 30 frames per second per camera, playback recorded video, view alarm instances and control PTZ cameras remotely. Through its user-friendly GUI- even non-security professionals can manage the video with comfort and ease.

REMOTE CLIENT (COMMAND CENTER)

- Up to 128 channel remote management from multiple servers
- Real-time video viewing at 30 frames per second per camera
- Automatic video alarm notification
- Advanced Smart Search of video analytics on recorded data
- Intuitive full direction on-display PTZ control
- Support digital PTZ control
- Synchronization of video and audio presentation
- Automatic time synchronization with other Instek Digital units
- Multiple authentication levels of user operation
- Export recorded video to local file in proprietary format or AVI-format
- Remote Instek Digital DVR/NVR system configuration
- Video display in 1x1, 2x2, 3x2, 3x3, 4x4, 1+7, 2+7, 2+8 and 1+12 layouts
- Instant snapshot of video image to JPEG-file
- Digital signature with watermark protection
- Map Builder
- Argus View
- Log File

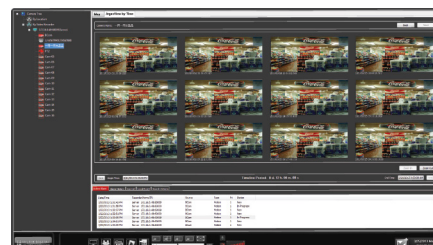
WEB CLIENT

- Live view, playback forward / backward (Internet Explorer 9 or later recommend)
- PTZ and multi-view
- Audit Trail
- Local Archiving (AVI/IVF)
- Video snapshot

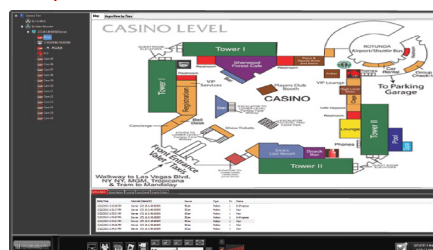
MOBILE CLIENT

- Supports cross mobile platforms: iOS, Androaid
- Mobile Features: Live View / Patterns / Playback / PTZ

Argus View



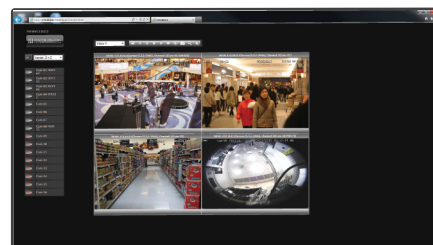
Map Builder



Digital PTZ

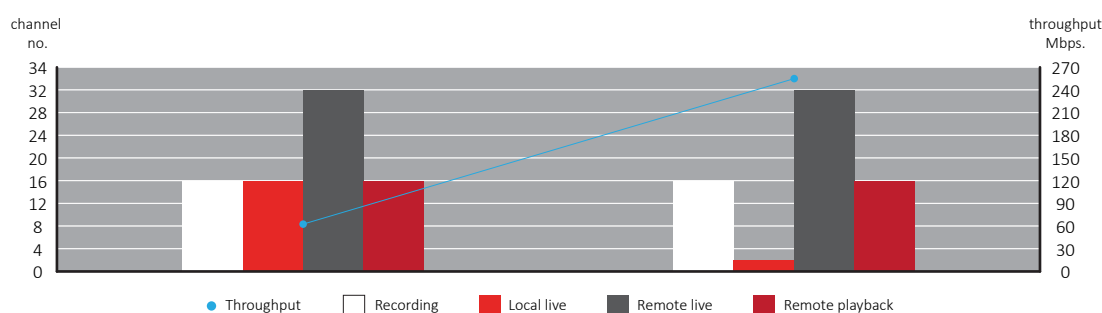


Web Client



Recording with Local Live View & Playback

Resolution	Frame rate	Throughput (Mbps)	Recording (No. CH)	Local Live (No. CH)	Remote Live (No. CH)	Remote Playback (No. CH)
D1 (1 Mbps)	30	64 Mbps	16	16	32	16
Full HD (4 Mbps)	30	256 Mbps	16	2	32	16



Comparison

	Instek Digital HD Cube NVR	Random brand*
Recording		
Performance	Frame rate 30 fps @ Full HD	Frame rate 30 fps @ D1 or VGA
Local display		
Live view @ D1 (CH)	16	12
Playback (CH)	16	1
Local alarm Management	O	-
Digital view	O	-
Remote Client		
ArgusView	O	-
Synchronize playback	O	-
Playback Speed	64 x	16 x

*Based on most occurring specification among different brands in the market.

Upgradeable

Instek Digital's HD Cube can be upgrade with advantage features from the Global and Enterprise line:

- NVR Failover
- Archive Server
- Global Administrator
- Streaming Manager
- TV Wall

System	Operating system	X86 Linux
	Network interface	1 Gigabit Ethernet
	Max. local decoding resolution	up to 1080P
	Storage resolution	all resolution
	Max. frame rate per channel	30 fps
	Hard-Disc Drive trays	4 swappable
	Supported codecs	H.264 / MPEG4 / MJPEG
	Audio input / output	1 / 1
	Video outputs	1 x VGA / 1 x DVI-D / 1 x HDMI
	Ethernet	1 x gigabit LAN
	USB	4 x USB3.0 + 2 x USB2.0
	Video server and camera support	3S, ACTI, Appro, Arecont Vision, Axis, Basler, Bosch, Brickcom, D-Max, Dynacolor, Etrovision, Hikvision Hisharp, Hi-tron, Hunt, ITX, IQinvision, JVC, Matricam, Messoa, Mobotix, Panasonic, Pelco, Pixord, Probe, Samsung, Sanyo, Secubest, Sony, Uniview, Vivotek
	ACS	Cardex, CEM, Kantech
	Operating temperature	0 ~ 40°C
	Humidity	Max. 90%, non-condensing
Environmental		
Electrial	PSU	AC 100V ~ 240V
	Power consumption	315W
Mechanical	Dimensions w / wo box (WxDxH mm)	330 x 450 x 400 / 210 x 311 x 235
	Weight w / wo box (kg)	8.8 / 5.5
Features	Watchdog	Yes
	ONVIF	2.0 and Profile S

a) The actual video display performance may vary according to type of camera(s) and lighting condition.

b) Product specifications and availability are subject to change without notice.

c) Instek Digital is a registered trademark of Good Will Instrument Co., Ltd.

Models:

Details:

HR-NR5416-C4

16 camera channels, 4 removable HDD bays, supporting local display

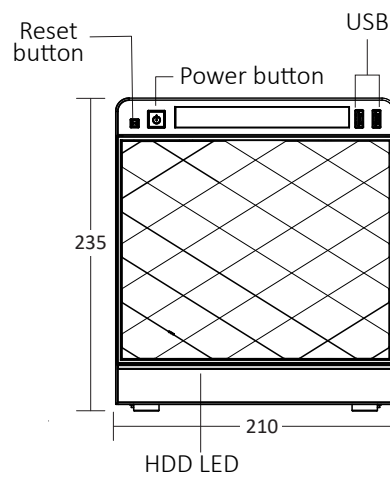
HR-NR5409-C4

9 camera channels, 4 removable HDD bays, supporting local display

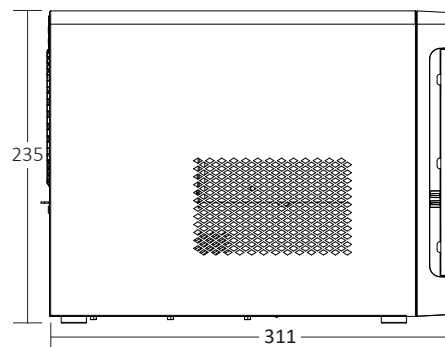
HR-NR5404-C4

4 camera channels, 4 removable HDD bays, supporting local display

Front View ID-NR5400-C4



Side View ID-NR5400-C4



Rear View ID-NR5400-C4

