



Accurate Positioning Solution integrated with video surveillance

Reliable

real-time and accurate location positioning

power of mesh connectivity, no worry if a device fails, the others will continue communicating without interruption



Safety

prevention of unauthorized entrance

monitor staff, visitors and mobile objects

create a report with historical movements

alarm button for instant assistance

instant video footage in case of an incident



Efficient

low power consumption

increase operation efficiency

monitor people / object through Instek Digital™ VMS Command Center



INSTEK DIGITAL

Instek Digital is a video surveillance business unit of Good Will Instrument Co., Ltd. and focus on the development of high quality digital surveillance solutions. The company inherited over 20-years of surveillance experience. Instek Digital has the luxury of a strong financial background supported by Good Will Instrument Co., Ltd. – has over 40-years of electronics R&D and manufacturing experience. And Good Will Instrument Co., Ltd. is also listed on the Taiwan Stock Exchange.

Instek Digital offers a wide array of video surveillance software and hardware – under the brand of Instek Digital. The core design are based on the following principles; “User-Friendliness”, “Scalability” and “Reliability”. Instek Digital’s solutions are based on an open platform – creating seamless third party integration. With this concept Instek Digital has created a business model that can meet every aspect in today’s surveillance demand. The results speak for themselves – based on small and large projects that we have deployed around the world.

Model	SD-PU20P1
Function	Wrist Tag
Interface	Ultra Wideband
Technique	TDOA (Time Differences of Arrivals)
Range	max. 50m line-of-sight (recommended 20m)
Location accuracy	< 1m
Parameter setting	0 ~ 65535 sec, ID setting, G-sensor sensitivity
Security	DPS (Dynamic Preamble Selection)
Button functionalities	power button customizable button alarm button
LED display	power on/off
Battery	lithium 380mAh
Voltage	3.5- 4.2V
Power consumption	10 sec. / 2 months
Dimension (W x D x H mm)	40 x 9.8 x 43.5
Weight (g)	78



Model	SD-PU20P2
Function	Card Tag
Interface	Ultra Wideband
Technique	TDOA (Time Differences of Arrivals)
Range	max. 50m line-of-sight (recommended 20m)
Location accuracy	< 1m
Parameter setting	0 ~ 65535 sec, ID setting, G-sensor sensitivity
Security	DPS (Dynamic Preamble Selection)
Button functionalities	power button emergency button AUX button
LED	power on/off signal configuration battery level
Battery	libattery 500mAh x 2
Power consumption	10 sec. / over 2 years
Dimension (W x D x H mm)	54 x 6.8 x 84
Weight (g)	21



Model	SD-PU20G2	SD-PU20GT2
Function	Industrial Reference Node	
Standard	Ultra Wideband 802.15.4a	
Technique	TDOA (Time Differences of Arrivals)	
Communication interface	Ultra Wideband / WiFi / RJ45 (PoE)	
Location accuracy	< 1m	
Time priority synchronization	-	Tag Time Allocator
Frequency	3.25 ~ 6.75 Ghz	
Antenna angle	360 degrees	
Security	DPS (Dynamic Preamble Selection)	
Installation	wall-hanging	
Input voltage	DC + 5V	
Dimension (W x D x H mm)	147 x 86 x 41	

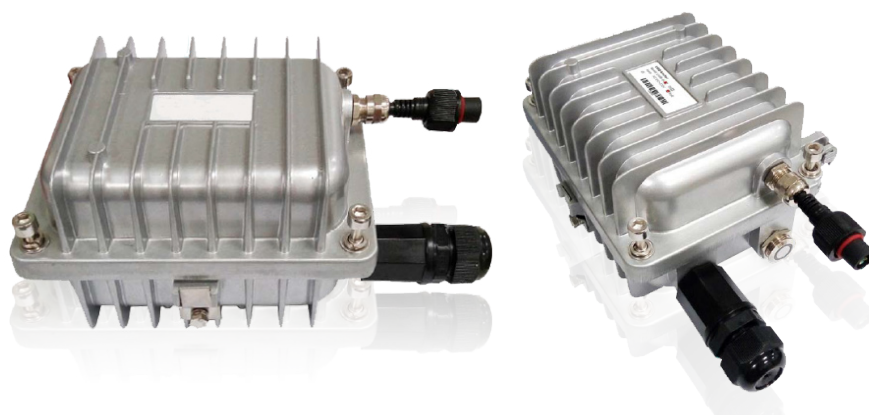


Model	SD-PU20G3	SD-PU20GT3
Function	Ceiling Reference Node	
Standard	Ultra Wideband 802.15.4a	
Technique	TDOA (Time Differences of Arrivals)	
Communication interface	Ultra Wideband / WiFi / RJ45 (PoE)	
Max. range	100m line-of-sight (recommended 30~50m)	
Encryption standard	DPS (Dynamic Preamble Selection)	
Location accuracy	< 1m	
Time priority synchronization	-	Tag Time Allocator
Frequency	3.25 ~ 6.75 Ghz	
Antenna angle	360 degrees	
Installation	ceiling	
Input voltage	DC + 5V	
Dimension (W x D x H mm)	200x140x33	



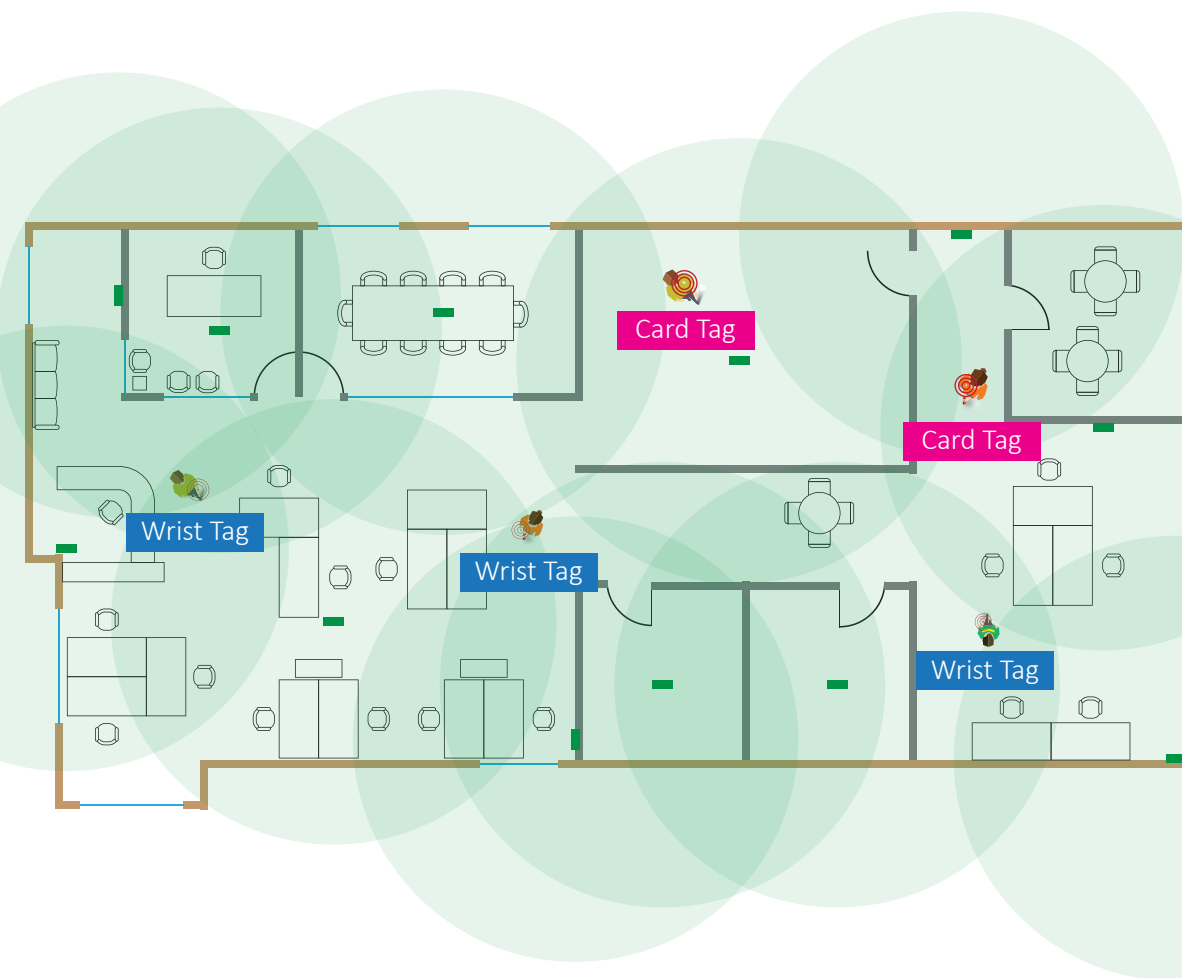
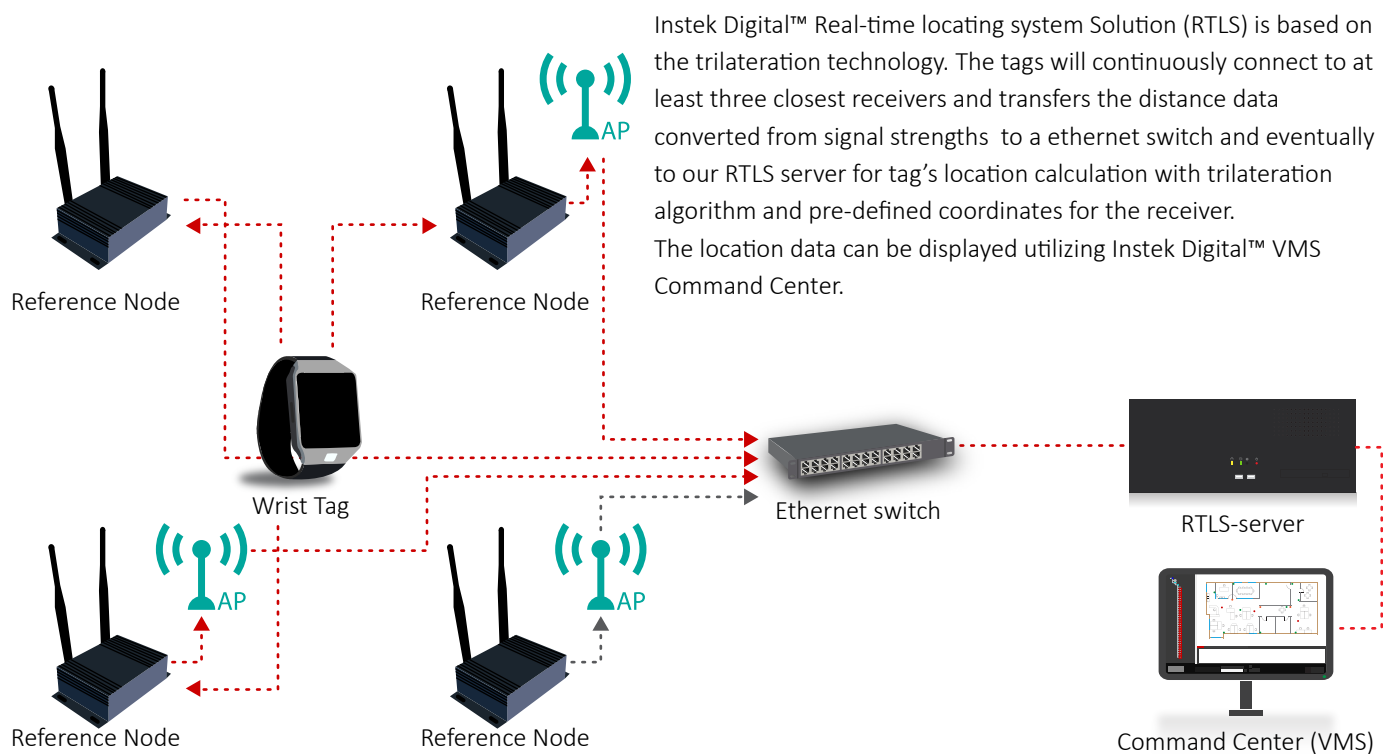
a) Product specifications and availability are subject to change without notice.
b) Instek Digital is a registered trademark of Good Will Instrument Co., Ltd.

Model	SD-PU20G4	SD-PU20GT4
Function	Waterproof Reference Node	
Standard	Ultra Wideband 802.15.4a	
Technique	TDOA (Time Differences of Arrivals) / TOF (Time of Flight)	
Communication interface	Ultra Wideband / WiFi / RJ45 (PoE)	
Max. range	100m (recommended 30~50m)	
Encryption standard	DPS (Dynamic Preamble Selection)	
Location accuracy	< 1m	
Time priority synchronization	-	Tag Time Allocator
Frequency	3.25 ~ 6.75 Ghz	
Antenna angle	360 degrees	
Installation	ceiling	
Input voltage	DC + 5V	
Dimension (W x D x H mm)	137.3 x 153.7 x 99.5	



Model	SD-PU20U1
Function	USB dongle
Flash	128K
Communication range	up to 50 meter (line-of-sight)
Communication interface	USB to RS232
Frequency	3.25 ~ 6.75 Ghz
Power consumption	transmitting < 50mA / receiving < 50mA / standby 50mA
Operation temperature	operating -25~75°C / storage -40~80°C
Humidity	max. 95%
Input voltage	DC + 5V
Dimension (W x D x H mm)	137.3 x 153.7 x 99.5





■ Reference Node