

MatriVideo Network Bullet Camera

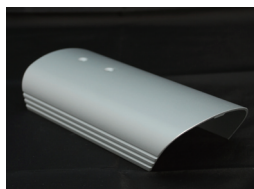
MC-AX4031 Series

Day & Night / WDR / All-in-One

Features

- ◆ 1/4" Progressive Scan CMOS
- ◆ Built-in IR Illuminators, Effective up to 82 Feet / 25 Meters
- ◆ Day and Night function with Mechanical IR Cut Filter
- ◆ Varifocal 3.8~9.5mm/ F1.1 or 3.3~12 mm/ F1.5 Lens
- ◆ VGA Resolution (640x480 pixel) at 30 FPS
- ◆ Wide Dynamic Range (WDR) Capability
- ◆ Two-way Audio Supported
- ◆ Intelligent Motion Detection
- ◆ Plug-n-Play with Auto Camera Discovery tool
- ◆ Two Digital Inputs / Two Digital Outputs
- ◆ Class 2 Power over Ethernet (PoE) Supported

Accessory - Sun Shield



The MatriVideo MC-AX4031 Series is a cost-effective bullet type network camera specially designed for an indoor or semi-outdoor environment.

Equipped with built-in IR with an effective range of up to 82 feet / 25 meters, along with a mechanical IP-cut filter, the MC-AX4031 series Network Camera is able to provide a steady and accurate image day and night. With WDR (Wide Dynamic Range) functionality, the camera is able to maintain its extraordinary performance under various light source environments. PoE models are also available to reduce the installation and cabling efforts.

The cameras also incorporate a number of advanced features, such as progressive scan, low bit-rate design, and a solid metallic exterior.

MC-AX4031 Network Cameras can be monitored from a standard Microsoft IE browser. With an IP search tool and web-based configuration tool, it is easy to locate and manage the network cameras.

MX-AX4301 Network Cameras work seamlessly with MatriVideo Hybrid DVR and NVR. The camera configuration and setup is fully integrated with MatriVideo Command Center central management software.

The MatriVideo network bullet cameras are perfect for banks, hotels, airports, public facilities, retails, entrances and hallways.



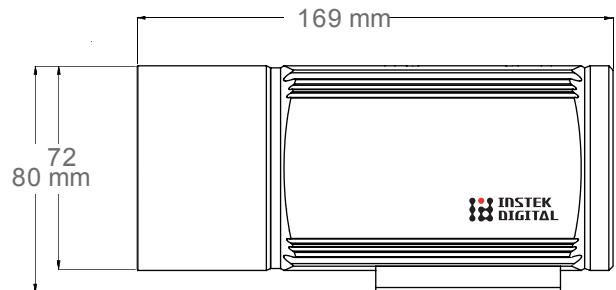
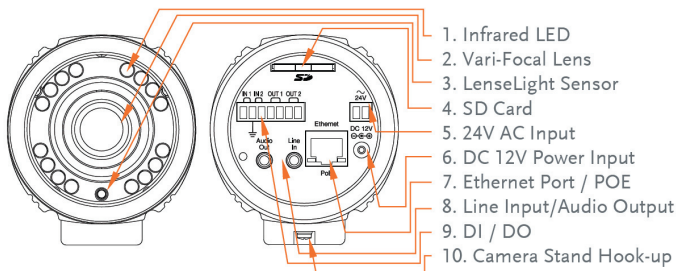
Specifications

MatriVideo Network Bullet Camera		MC-AX4031-WE
SELECTION GUIDE	Lighting Condition	Strong Contrast, Entrance, Window, ...
IMAGE SYSTEM	Sensor Type	1/4" progressive scan CMOS sensor
	Mini Illumination	0 Lux(w/IR), Built-in IR LEDs (IR working distance <25m)
	Synchronization	Internal
	Functions	AWB/ AGC/ AEC
	WDR Model	Yes
LENS Type	Mount	Board lens
	Focal length	Variable Focal Length 3.3~12.25mm/ F1.5
	ICR	Yes
VIDEO	Video Compression	MPEG-4
	Video Resolution	640 x 480 (VGA) 320 x 240 (QVGA)
	Video Frame rate	30 fps at VGA
	Motion Detection	multi-zone for detection, sensitivity adjustable
AUDIO	Audio Compression Format	G.711 μ -Law
	Line input	Unbalance 1.2Vp-p, 3.5mm Phone Jack
	Line Output	Unbalance 1.8Vp-p, 3.5mm Phone Jack
External I/O	Digital Input	Two DI Port
	Alarm Output	Two Relay output (NO)
NETWORK	Ethernet	10/100Base-T, RJ-45 connector
	Supported Protocol	TCP, UDP, IP, HTTP, FTP, SMTP, DHCP, DNS, DDNS, ARP, ICMP, IGMP
	Stream Bit Rate	100 Kbps~4 Mbps, VBR or CBR
	Web browser	Microsoft Internet Explorer 6.0 or above
SOFTWARE SUPPORT	Video Management	MatriVideo CommandCenter, MatriVideo CommandCenter Lite, MatriVideo CommandCenterOne
	SDK	Active X, C SDK
	Firmware	Supports remote firmware update
SECURITY	Video Server, IP Camera	User authorization for accessing camera
ELECTRICAL	Power Input	AC24V / PoE Class 2
	Power Consumption	4.3 W
ENVIRONMENT	Operational Temperature	-10 °C~ 50 °C
	Operational Humidity	Rh85% or less
	Storage Temperature	-20 °C~ +70 °C
	Waterproof (IP66)	-
PHYSICAL	Dimension	206mm(L) x 85mm(W) x 84mm(H)
	Weight	600g

* Product specification and availability are subject to change without notice.

** MatriVideo is a registered trademark of Instek Digital. All other trademarks are the property of their respective owners.

Dimension Diagram



INSTEK DIGITAL
 www.instekdigital.com

Instek Digital USA

3661 Walnut Ave.,
 Chino, CA 91710, USA
 TEL 1 (909) 627-8811
 FAX 1 (909) 627-8838
 Email sales@instekdigital.com

Instek Digital Taiwan

4F, No.119-1, Baozhung Road,
 Xindian City, Taipei County, Taiwan 231
 TEL 886-2-29141839
 FAX 886-2-29101803